



# GMT MONTHLY MEMBERSHIP PROGRESS REPORT

Results as of: 4/30/2017

Multiple District 14

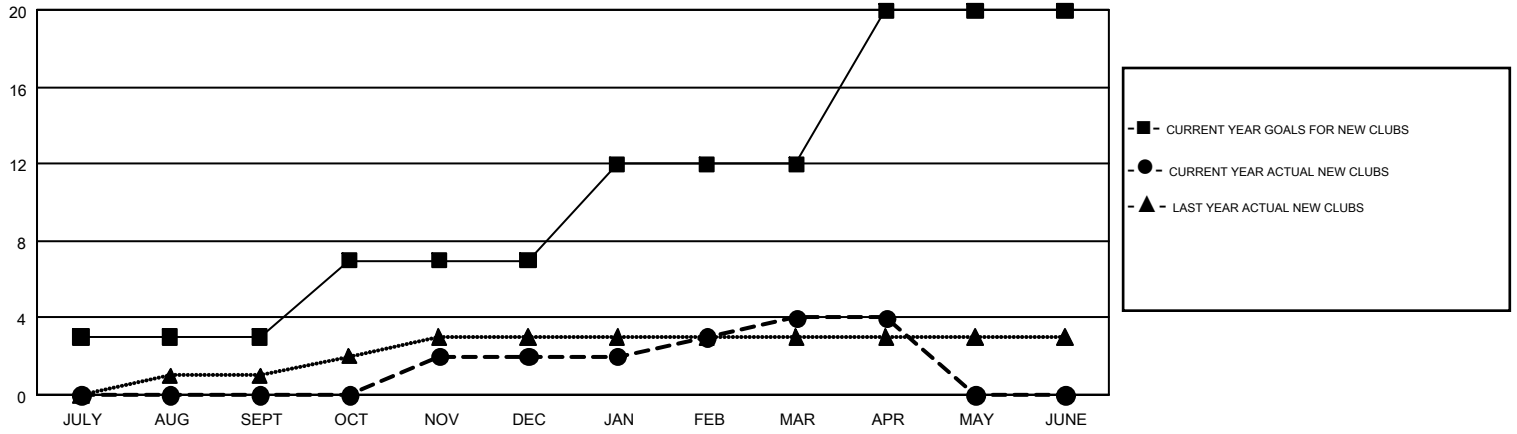
LOCATION: PENNSYLVANIA

GMT: CINDY GREGG

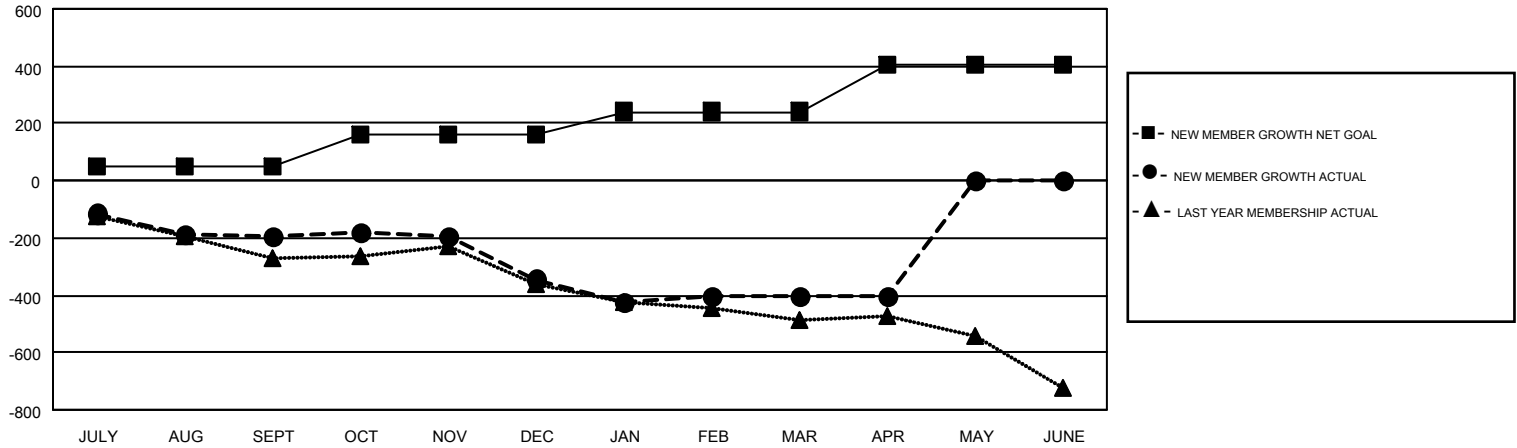
GMT CA 1

| Clubs                 |               |           |               | Members               |  |  |  |
|-----------------------|---------------|-----------|---------------|-----------------------|--|--|--|
| RESULTS FOR 2016-2017 |               |           |               | RESULTS FOR 2016-2017 |  |  |  |
| QUARTER               | NEW CLUB GOAL | NEW CLUBS | DROPPED CLUBS | QUARTER               | NEW MEMBER GROWTH NET GOAL (not reinstated or transfers) | NEW MEMBER GROWTH ACTUAL (not reinstated or transfers) | DROPPED MEMBERS ACTUAL (including transfers) |
| JULY/AUG/SEPT         | 3             | 0         | 3             | JULY/AUG/SEPT         | 48   | 283  | 478  |
| OCT/NOV/DEC           | 4             | 2         | 2             | OCT/NOV/DEC           | 113  | 365  | 514  |
| JAN/FEB/MAR           | 5             | 2         | 4             | JAN/FEB/MAR           | 80   | 407  | 466  |
| APR/MAY/JUNE          | 8             | 0         | 0             | APR/MAY/JUNE          | 162  | 118  | 116  |

GOALS AND ACTUAL NEW CLUBS CUMULATIVE



GOALS AND ACTUAL MEMBERS CUMULATIVE



|                        |  |                                 |                 |
|------------------------|--|---------------------------------|-----------------|
| DROPPED CLUBS: 9       | 397 CLUBS OF 702 ADDED 1 OR MORE NEW MEMBERS | <u>GENDER DISTRIBUTION</u>      |                 |
| <u>DROPPED MEMBERS</u> |  | MALE                            | 14,496 (75.59%) |
| DECEASED               | 339  | FEMALE                          | 4,681 (24.41%)  |
| CLUB CANCELLED         | 90   | TOTAL FAMILY UNIT MEMBERS       |                 |
| OTHER                  | 1,143  | 3,431                           |                 |
| TOTAL                  | 1,572  | FAMILY MEMBERS PAYING HALF DUES |                 |
|                        |  | 1,768                           |                 |

[CLICK HERE FOR CUMULATIVE MEMBERSHIP DATA](#)